

Accessibility Support Center (ASC)

ORIENTATION INFORMATION


Cabrillo College



Accessibility Support Center (ASC)

(part of state-wide DSPS)

- ▶ Accommodations & Services
- ▶ Assistive Technology & Alternate Media
- ▶ Academic Counseling
- ▶ Learning Disabilities Evaluation
- ▶ Learning Skills Classes
- ▶ Tutoring
- ▶ Test Proctoring
- ▶ Campus Transportation



Students we serve include those with...

- Learning disabilities (LD)
- Attention deficit disorders (ADHD)
- Autism spectrum (ASD)
- Acquired/Traumatic Brain Injury
- Mental health diagnoses
- Physical disabilities
- Other

Eligibility for services is determined by ...

- Documents from a doctor, psychologist, or other licensed health professional
- Documents from an IEP or 504 Plan from a K-12 school
- Documents from a college or university
- Evaluation for Learning Disabilities at Cabrillo

Some examples of students served...

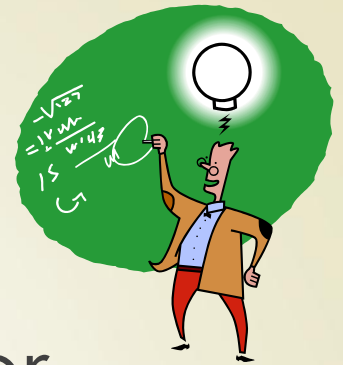
- Mental health diagnoses: Depression, anxiety, bipolar disorder, & others
- Physical disabilities: Hearing &/or vision impairment, mobility issues, dexterity & fine motor limitations, & others
- ASD: Autism, Asperger's Syndrome, neuro-atypical syndromes
- LD: Dyslexia, dysgraphia, dyscalculia, slow processing speed, working memory challenges, & others.
- Attention deficit disorders: ADHD, ADD.

What is a Learning Disability?

(According to California Community College Guidelines)

- Average to Above Average Cognitive Ability (Intelligence)
- Average Achievement in at least one area
- Processing Deficit, and/or
- Aptitude-Achievement Discrepancy

ABILITY



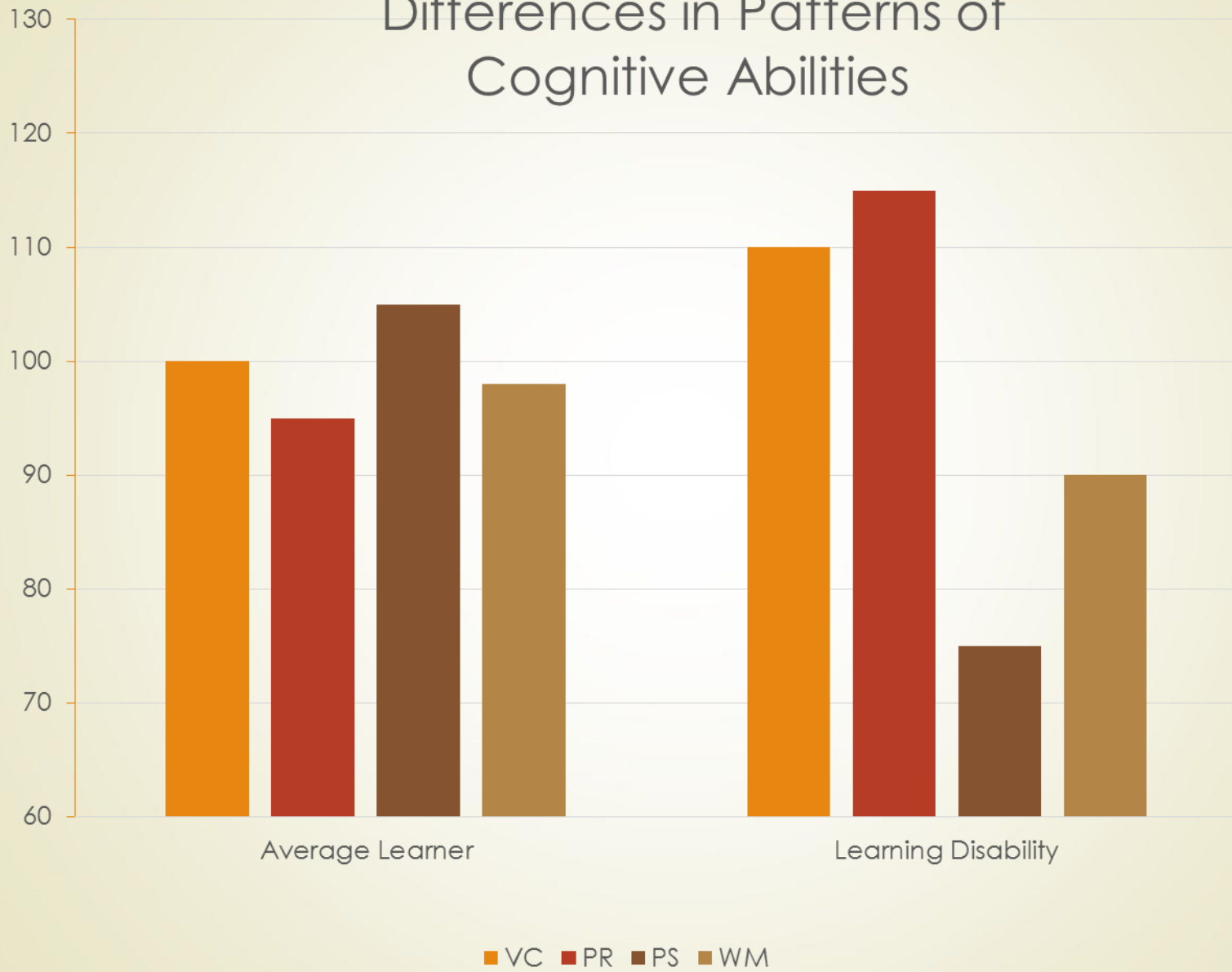
- Cognitive skills needed for reasoning & problem solving, including...
 - Verbal Comprehension
 - Perceptual Reasoning
- Cognitive skills are measured with standardized tests

ACHIEVEMENT

- Measured by academic skills tests of
 - READING
 - WRITING
 - MATH




Differences in Patterns of Cognitive Abilities





PROCESSING DEFICIT
can cause problems with


➤ VISUAL PROCESSING

- May confuse letters and numbers: see 67 as 76, b as d, etc.
 - May take longer to read and/or process visual information
- 



PROCESSING DEFICIT
can cause problems with

➤ AUDITORY PROCESSING

- Trouble with lectures (keeping up with pace of speaker)
 - Need frequent repetition of auditory information
- 



PROCESSING DEFICIT
can cause problems with

➤ SEQUENCING

- Trouble recalling correct order:
 - Spelling, order of operations in math, organizing essays, recalling events in history or literature



PROCESSING DEFICIT
can cause problems with

➤ **ABSTRACT THOUGHT**

- Difficulty understanding or explaining complex concepts
- Problems understanding figurative language, math word problems

➤ **SPONTANEOUS LANGUAGE**

- Difficulty finding words when speaking or writing

PROCESSING DEFICIT
can cause problems with

➤ MEMORY

➤ Short-term:


- Problems staying focused long enough to remember,
- Trouble remembering phone numbers long enough to dial

➤ Long-term:

- Problems remembering lectures, reading, etc.



What A **Learning Disability** Is **NOT**

- ▶ An intellectual disability
 - ▶ A lack of motivation
 - ▶ An emotional disturbance
 - ▶ A result of a poor academic background
 - ▶ A visual, auditory, or other physical deficit
- 

DIAGNOSTIC ASSESSMENT PROCESS

- **ORIENTATION:** Overview of ASC Services (1 hour)
- **LD GROUP TESTING:** Achievement testing (2 hours)
- **INDIVIDUAL TESTING:** (4-6 appointments of 1 to 1.5 hours each)
 - **ACHIEVEMENT:** Tests in reading, writing, math
 - **COGNITIVE ABILITY:** Tests in verbal skills, perceptual reasoning, working memory, visual processing speed
- **RESULTS:** Individual discussion of test results; recommendations for study strategies, support services, and classes



SERVICES for ASC STUDENTS

- ▶ Services are based on individual needs
- ▶ Testing Accommodations
- ▶ Note Takers
- ▶ Tutorial Services
- ▶ Priority Registration
- ▶ Assistive Technology & Alternate Media
- ▶ Disability Related Scheduling & Counseling

LEARNING SKILLS CLASSES

- LS 200 **Math Study Skills** (1.5 units)
- LS 200L **Reduced Anxiety Lab** (1 unit)
- LS 264 **Study Skills** (3 units)
- LS 281 **Strategies for LD & ADD** (3 units)
- CG 286 **Transition to College** (2 units)
- **Adaptive PE** classes (many options)

