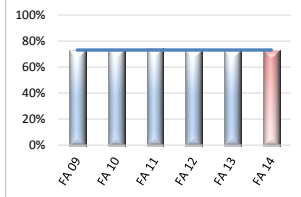


Institutional Set Standards - Benchmarks

In 2013, the Accrediting Commission for Community and Junior Colleges (ACCJC) requested that institutions develop local benchmarks in five specific areas: successful course completion, retention, degree completion, transfer, and certificate completion. The Cabrillo College Accreditation Steering Committee agreed that the institutional goals should be set *to meet or exceed the prior five-year average* for each of the respective measures. (See the section on Institutional Goals in the 2013 Accreditation Self Study.)

**1) Successful Course Completion
(credit courses)**



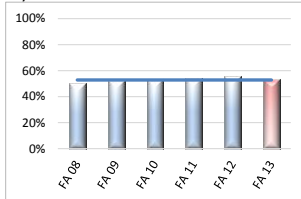
Semester	Percentage
FA 09	73%
FA 10	73%
FA 11	74%
FA 12	72%
FA 13	73%
5- year average:	73%

Percentage of all students enrolled at Census, completing courses with grades A, B, C, or P.

Currently: 73% (FA 14)

Meets the standard

2) Fall-to-Fall Retention



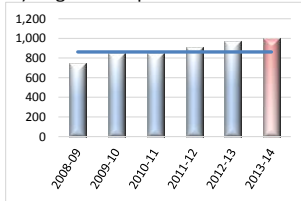
Semester	Percentage
FA 08	50%
FA 09	52%
FA 10	53%
FA 11	54%
FA 12	55%
5- year average:	53%

Percentage of students enrolled in a Fall semester who enrolled the following Fall.

Currently: 53% (FA 13)

Meets the standard

3) Degree Completion



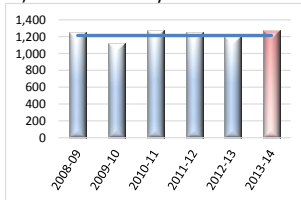
Year	Number of students
2008-09	738
2009-10	847
2010-11	849
2011-12	905
2012-13	970
5- year average:	862

Number of distinct students earning Associate degrees (AA/AS) per year.

Currently: 999 (2013-14)

Meets the standard

4) Transfers to 4-years Institutions



Year	Number of transfers
2008-09	1,243
2009-10	1,112
2010-11	1,268
2011-12	1,249
2012-13	1,199
5- year average:	1,214

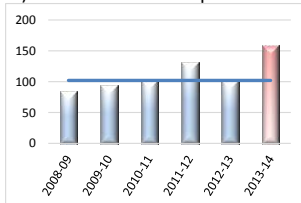
Transfers occurring after a student has earned 12 or more units at Cabrillo.

Year = year first-enrolled at 4-year college/university

Currently: 1,265 (2013-14)

Meets the standard

5) CTE Certificate Completion



Year	Number of students
2008-09	84
2009-10	93
2010-11	102
2011-12	130
2012-13	101
5- year average:	102

Number of distinct students earning CTE Certificates of Achievement (>= 18 units)

Currently: 159 (2013-14)

Meets the standard